

# 3<sup>rd</sup> Feeder World Championship for Clubs

13 to 19 May 2019

Ribeira de Raia – Cabeção - Portugal



Organização:



Apoio:



## Invitation

Dear Mr. President,



The Portuguese Federation of Sport Fishing has the honour of inviting the representative team of your country to take part in the 3<sup>rd</sup> Feeder World Championship for Clubs, that will be held on May 18<sup>th</sup> and 19<sup>th</sup> in Mora – Portugal.

Portugal is, as you may know, a warm and welcoming country and a place where sport fishing is a sport of choice for thousands of Portuguese people, people who devote to this event and feel an enormous pride and gratitude for your attendance.

In name of F.P.P.D. and, in my personal name, we wish everyone visiting us an excellent stay and that this Championship will achieve your goals, in an environment of peace, friendship and, above all, “fair play”.

The President of F.P.P.D.

Carlos Baptista

## Championship Location

The Riverside of Raia, which has been chosen to host the 3<sup>rd</sup> Feeder World Championship for Clubs, it's an already well-known venue and is situated in Cabeção near Mora, district of Évora in the region of Alentejo.

The village of Mora is situated at 125 Km from the Lisbon airport and at 115 Km from the border with Spain (Badajoz).



Inaugurated on the 12th of May 1992, the Sport Fishing International Venue of Cabeção is situated in the natural environment of the “Ribeira de Raia” in the village of Cabeção.

After being requalified, it has now a total extension of approximately 3 km and capacity for 190 boxes (“Pista Velha”, with an extension of 2 km and 125 boxes, and “Pista Nova”, with 1 km and 65 boxes). Its depth varies between 2 and 4 meters, and its bottom is composed by gravel and sand, clay and stones.

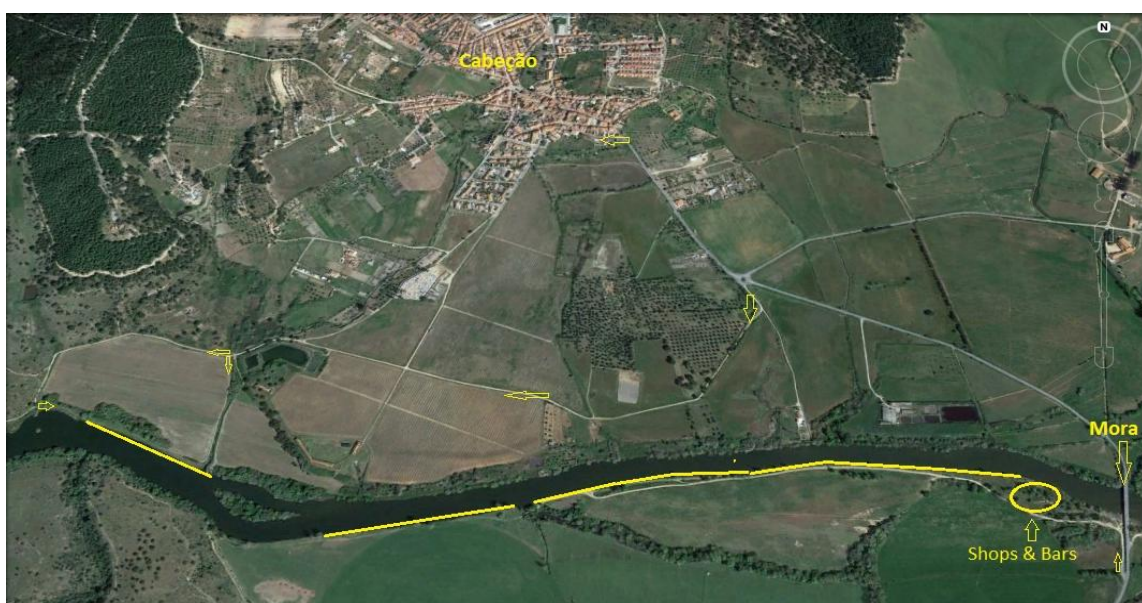
Stage for National and International Sportive Fishing Competitions, the Sportive Fishing International venue of Cabeção is one of the most varied circuits for practicing this discipline.

## Characteristics of the Raia Riverside

- Width: around 40 meters
- Depth: 1.5 to 3.5 meters
- Water with slow stream and not very clear
- Sandy ground, but with some grass



## Sector Location



Federação Portuguesa de Pesca Desportiva

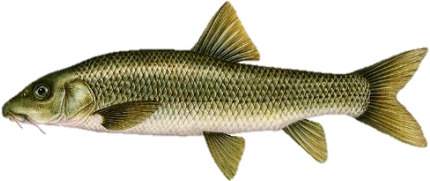

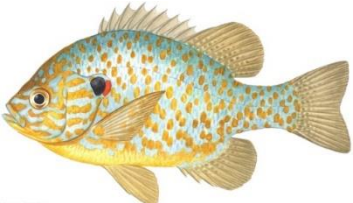


Rua Eça de Queirós, nº 3 – 1º

1050-095 Lisboa

Telef. 00.351.213140177

e-mail: [secretaria@fppd.pt](mailto:secretaria@fppd.pt) – Site: [www.fppd.pt](http://www.fppd.pt)

## Predominant Species

Barbel	
Bleaks	
Perch	
Black Bass	
Carp	

## Bait and Groundbait Limits

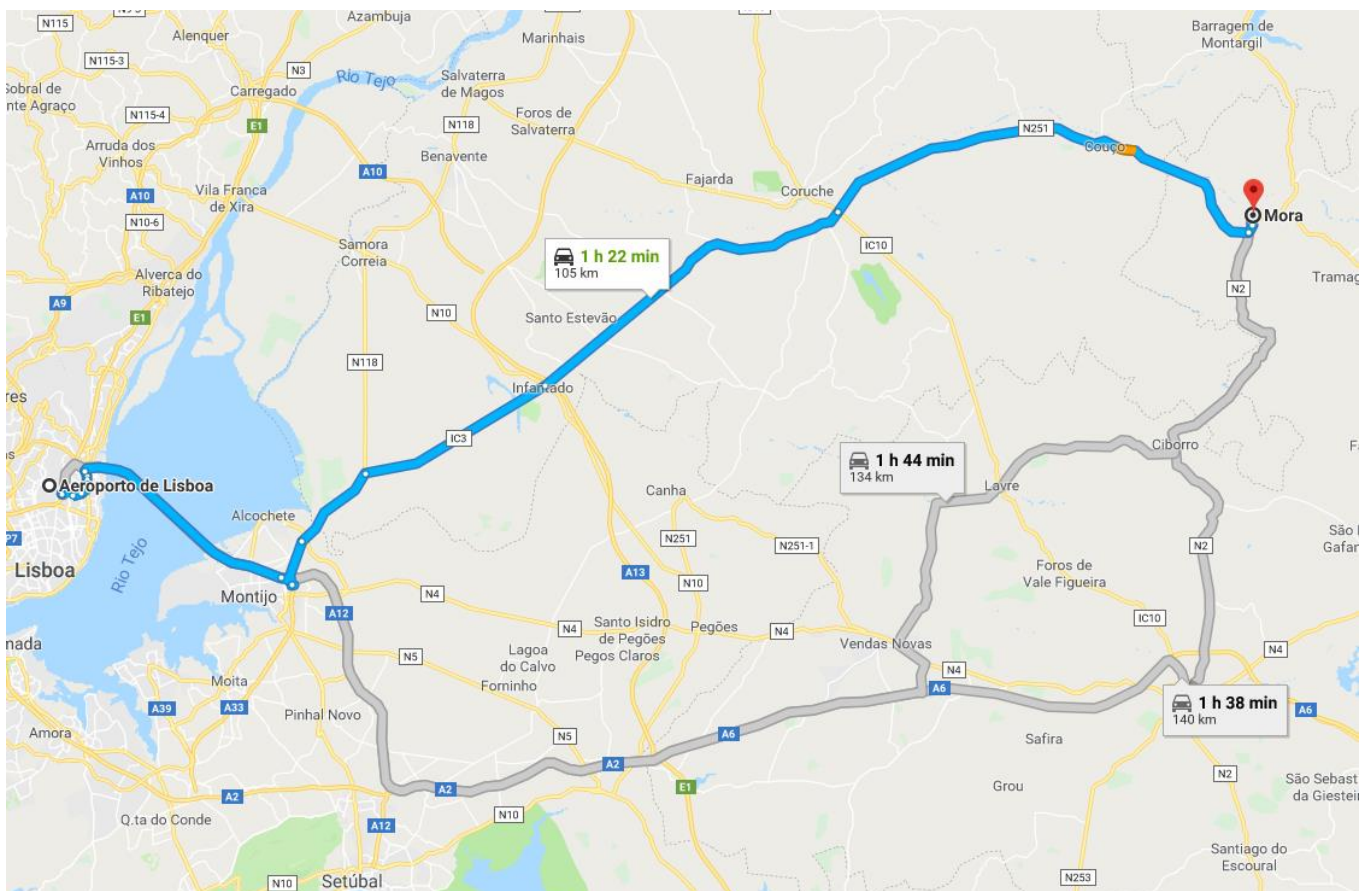
<b>Baits</b>	2,5 litres of live baits. A maximum amount of ½ litre of earthworms is allowed in the total baits. Jokers and bloodworms are not allowed.
<b>Groundbaits</b>	12 litres maximum ready to use (FIPSeD)



## How to Arrive to Mora

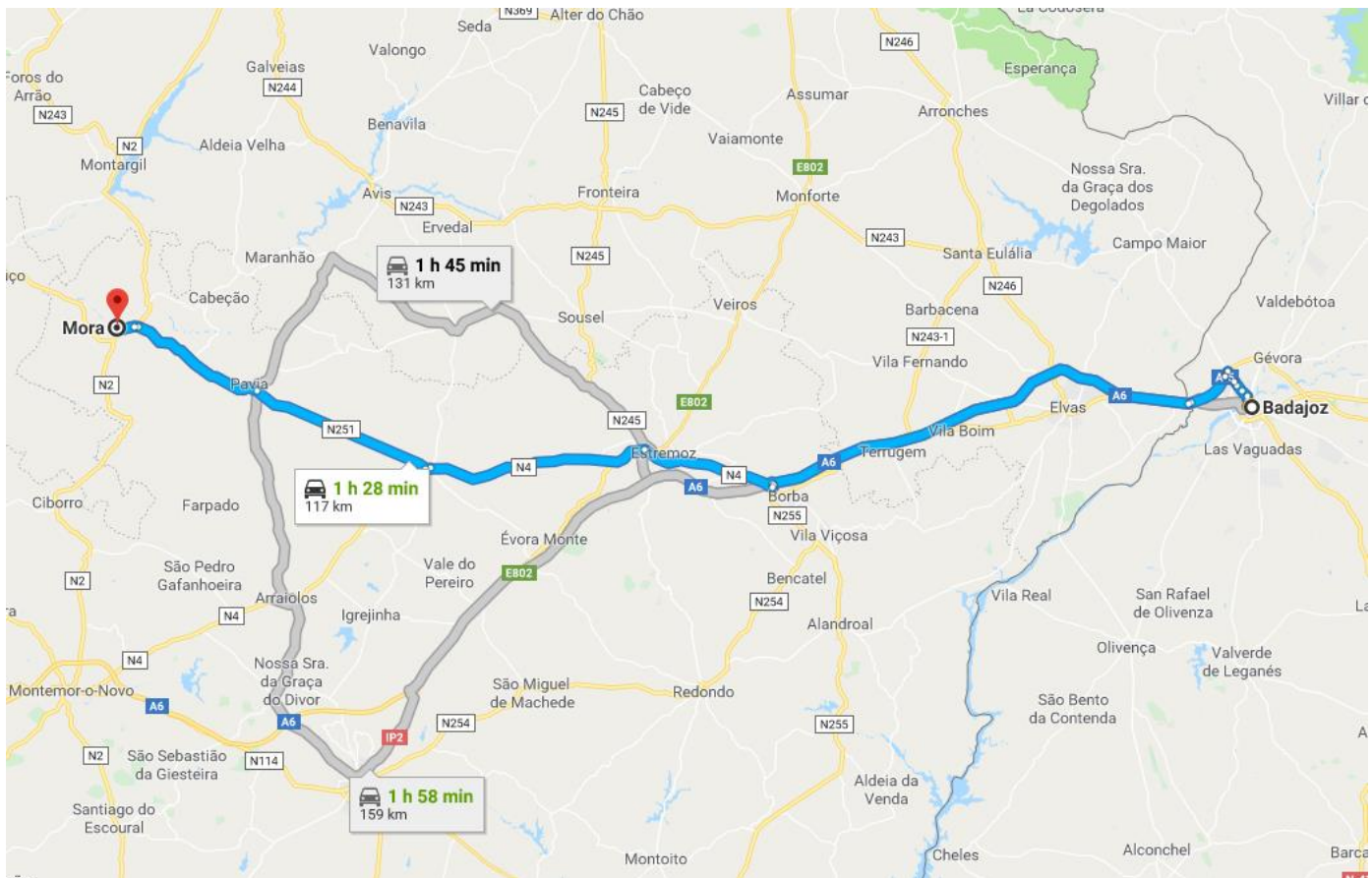
### If you come by plane (Lisbon Airport):

- Follow the **A12** towards Vasco da Gama Bridge;
- Follow the direction (IC32): Porto Alto/Alcochete, to the intersection to Coruche
- Direction Coruche ( $\pm 90$  Km)
- From the intersection in Coruche to Mora ( $\pm 40$  Km)



**If you come by road:**

- Follow the E-90/A-5 from Ponte Autonomía, Av. Padre Tacoronte, Carr. Campomayor, Calle Nevero Tres and Ctra. From Campo Maior
- Follow the A6, N4 and N251 to the Rua de São Pedroem Mora, Portugal ( $\pm$  112 Km)



## Accommodation

Unfortunately, there are not many hotels in the Town of Mora, but it is easy to find great accommodation in the surrounding area. The Portuguese Federation of Sport Fishing has already studied the accommodation capacity in the region:

### **CS Hotel do Lago Montargil, Montargil (± 20 Km of Cabeção)**

Estrada Nacional 2

7425-144 Montargil

GPS: Lat: 39° 4'26.03"N | Long: 8°9'59.77"

Telef. (+351) 242 241 250

Fax: (+351) 242 240 900

E-mail: [bookings@nauhotels.com](mailto:bookings@nauhotels.com)

Web: [www.cshotelsandresorts.com](http://www.cshotelsandresorts.com)



### **Casa da Vila de Cabeção**

Rua Dr. José Ferreira Prates Canelas, nº 2

7490-093 Cabeção

Tel: (+351) 934 540 844 – (+351) 266 419 145

**Federação Portuguesa de Pesca Desportiva**

Rua Eça de Queirós, nº 3 – 1º

1050-095 Lisboa

Telef. 00.351.213140177

e-mail: [secretaria@fppd.pt](mailto:secretaria@fppd.pt) – Site: [www.fppd.pt](http://www.fppd.pt)



### Casas de Romaria

Rua da Igreja, 30  
7490-017 Brotas  
Tel./ Fax: (+351) 266.487.003  
Tlm: (+351) 966.948.643/ (+351)962.474.164  
E-mail: [geral@casasderomaria.com](mailto:geral@casasderomaria.com)  
Web: <http://www.casasderomaria.com>



### Monte da Fraga

Herdade do Paço de Baixo  
Tel. (+351)266. 439.125  
E-mail: [montecoureladafraga@sapo.pt](mailto:montecoureladafraga@sapo.pt)  
Web: <http://www.montecoureladafraga.com>



### Albergaria dos Lilases

Rua de Santo António, n.º 8  
7490-236 Mora  
Tel. (+351) 266.403.315  
Fax. (+351) 266.403.255  
E-mail: [geral@hotelsolardoslilases.com](mailto:geral@hotelsolardoslilases.com)  
Web: [www.solardoslilases.com](http://www.solardoslilases.com)

There are still other accommodations at  $\pm 10/15$  Km from Cabeção / Mora

### Federação Portuguesa de Pesca Desportiva

Rua Eça de Queirós, n.º 3 – 1.º  
1050-095 Lisboa  
Telef. 00.351.213140177  
e-mail: [secretaria@fppd.pt](mailto:secretaria@fppd.pt) – Site: [www.fppd.pt](http://www.fppd.pt)

## Prices

In compliance with FIPSeD rules:

Team Registration Fee:	1,300.00 €
FIPSeD Fee:	150.00 €
<b>Total:</b>	<b>1,450.00 €</b>

Extra Final Banquet – € 50.00

The extra banquets can be bought at the secretary of the championships according to the places available.

## Payment

All payments must be made by bank transfer and before **7 of April** directly to:

<b>Federação Portuguesa de Pesca Desportiva</b> Banco Santander Totta – Rua Rodrigues Sampaio, 174 – B 1150-282 Lisboa  IBAN: PT50 0018 0000 1068 9096 0019 6 BIC/SWIFT: TOTAPTPL
--

Email: [secretaria@fppd.pt](mailto:secretaria@fppd.pt) Tel: +351 213 140 177

Please don't forget to your country's national anthem and flag.

For more information: [www.fppd.pt](http://www.fppd.pt)

## Important telephone numbers:

**Organization:** +351 964 230 227

**International Emergency:** 112

**Police (Mora):** +351 266 439 080

**Federação Portuguesa de Pesca Desportiva**  
Rua Eça de Queirós, nº 3 – 1º  
1050-095 Lisboa  
Telef. 00.351.213140177  
e-mail: [secretaria@fppd.pt](mailto:secretaria@fppd.pt) – Site: [www.fppd.pt](http://www.fppd.pt)

## Registration of Teams

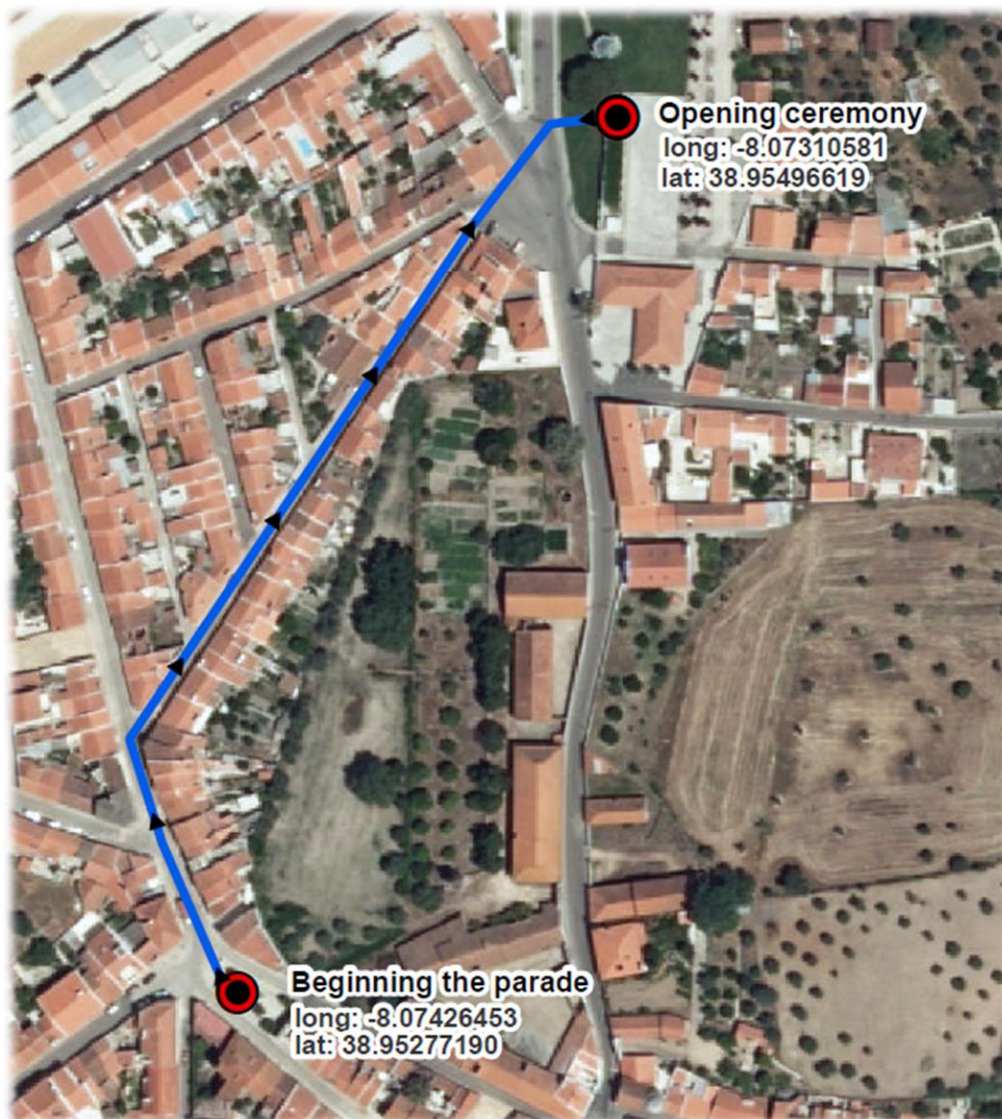
All delegations should register at the Organization's Secretary located on Casa do Povo de Cabeção on the 16<sup>th</sup> of May from 10:00 to 12:00.

You can contact Mr. Bruno Valente, the contact person in charge of the logistics, for any situation, at the +351 964 230 227 or +351 936 525 852.

## Opening Ceremony and Presentation of the Teams

The opening ceremony of the Feeder World Championship for Clubs will be held on Thursday, the 16<sup>th</sup> of May 2019 in Cabeção.

All athletes, team captains and executive managers should reach within 05:45 pm at the place marked in the image bellow as “Beginning of the Parade”.





## **Prize Giving and Closing Dinner**

It will take place at 07:30 pm of the 19<sup>th</sup> of May 2019, followed by the Closing Dinner at 08:00 pm (the location will be sent posteriorly).

## **Official Training Program**

For the official trainings, the drawing and distribution of the «box» numbers for the teams will take place on Monday 13<sup>th</sup> May 2019 at 07h00 am, at the entrance of the fishing lane of Ribeira de Raia according to FIPS-ed, official grid. The official training will take place as follows:

From Monday, 13<sup>th</sup> May to Wednesday 15<sup>th</sup> May 2019: from 10:00 am to 06:00 pm.

Thursday 16<sup>th</sup> May and Friday 17<sup>th</sup> May 2019, only from 10:00 am to 03:00 pm.

## **Captains Meetings**

The Captains meetings and the draw for the two days of competition, will be held on Casa do Povo de Cabeção.

## Official Program

### Monday: 13 of May of 2019

07h00 – 09h00	Drawing of the boxes
09h50	Heavy baiting
10h00	Beginning of training
18h00	End of training

### Tuesday: 14 of May of 2019

09h50	Heavy baiting
10h00	Beginning of training
18h00	End of training

### Wednesday: 15 of May of 2019

09h50	Heavy baiting
10h00	Beginning of training
18h00	End of training

### Thursday: 16 of May of 2019

10h00 – 12h00	Reception of teams – Casa do Povo de Cabeção
09h50	Heavy baiting
10h00	Beginning of training
15h00	End of training
18h00	Opening Ceremony - Cabeção
	Welcoming Dinner

### Friday: 17 of May of 2019

09h50	Heavy baiting
10h00	Beginning of official training
15h00	End of official training
16h00	Captains meeting – Casa do Povo de Cabeção

**Saturday: 18 of May of 2019**

07h00	Captains meeting - Drawing of positions – Casa do Povo de Cabeção
08h00	1 <sup>st</sup> signal - Admittance of the anglers in the pegging
08h45	2 <sup>nd</sup> signal – 5 minutes for bait and ground bait control
08h50	3 <sup>nd</sup> signal - Bait and ground bait control
09h50	4 <sup>th</sup> signal - Heavy baiting, no fishing allowed
10h00	5 <sup>th</sup> signal - Beginning of the 1 <sup>st</sup> leg
14h55	6 <sup>th</sup> signal - 5 minutes to the end of the 1 <sup>st</sup> leg
15h00	7 <sup>th</sup> signal - End of the 1 <sup>st</sup> leg and weighing operation
17h30	Publication of results of the 1 <sup>st</sup> leg, Captains Meeting and draw of sectors

**Sunday: 19 of May of 2019**

06h30	Captains meeting - Drawing of positions for the 2 <sup>nd</sup> leg – Casa do Povo de Cabeção
08h00	1 <sup>st</sup> signal - Admittance of the anglers in the pegging
08h45	2 <sup>nd</sup> signal – 5 minutes for bait and ground bait control
08h50	3 <sup>nd</sup> signal - Bait and ground bait control
09h50	4 <sup>th</sup> signal - Heavy baiting, no fishing allowed
10h00	5 <sup>th</sup> signal - Beginning of the 2 <sup>nd</sup> leg
14h55	6 <sup>th</sup> signal - 5 minutes to the end of the 2 <sup>nd</sup> leg
15h00	7 <sup>th</sup> signal - End of the 2 <sup>nd</sup> leg and weighing operation
17h30	Publication of the Final Results
19h30	Prize Giving Ceremony
20h00	Closing Dinner



## **Important anti-doping indications**

It is athlete responsibility to check the permissibility of the preparation he or she uses against up to date list.

Particular attention must be paid for the use of anti-hypertensive agents, especially diuretics, very popular in singular preparation and/or in combination con other, normally admitted, drugs. Diuretic are always forbidden.

For these reasons, it is necessary for each athlete, sport club or National Federation to visit the website <https://www.wada-ama.org/en/content/what-is-prohibited> where you can find all prohibited substances and, if necessary, to present the necessary application for Therapeutic Use Exemption (TUE).

## **Therapeutic use exemptions (TUE)**

If for health reasons an athlete requires the assumption of a substance or the employ of a method included in the prohibited list, before taking part to a competition, her or he must obtain a TUE to use a prohibited substance or method and he or she must fill in the TUE application form carefully together with the physician. The physician shall also append the required documentation to the application.

A physician's certificate or prescription on its own does not mean that the athlete has permission to use the prohibited substance or method.

Following the appropriate procedure, In a case of national level athlete a TUE must be applied to National Anti-Doping Organization (NADO) or, in her absence, to a Regional Anti-Doping Organization (RADO).

For athletes involved in International competitions, directly to Cips President's office: [office@cips-fips.com](mailto:office@cips-fips.com)

In both cases, national or international athlete, the application form must be filled, possibly in English or French, in any part by the athlete and by him/her physician.

The indications and the application form are downloadable at the address: [https://www.wada-ama.org/sites/default/files/resources/files/wada-2016-istue-final-en\\_0.pdf](https://www.wada-ama.org/sites/default/files/resources/files/wada-2016-istue-final-en_0.pdf).

## Registration Form

<b>FORM A</b>
---------------

Club:

Federation:

Address:

Telephone:

Email:

Person of contact:

Telephone:

Email:

Date:

Signature:

Please fill in the above and send it by no later than: **7 of April 2019**

Email: [secretaria@fppd.pt](mailto:secretaria@fppd.pt) | Tel: +351 213 140 177

**Federação Portuguesa de Pesca Desportiva**  
Rua Eça de Queirós, nº 3 – 1º  
1050-095 Lisboa  
Telef. 00.351.213140177  
e-mail: [secretaria@fppd.pt](mailto:secretaria@fppd.pt) – Site: [www.fppd.pt](http://www.fppd.pt)

## Registration Form

<b>FORM B</b>
---------------

Club: \_\_\_\_\_

	Name	Surname	Shirt Size
Angler			
Angler			
Angler			
Angler			
Angler			
Reserve			
Captain			
2 <sup>nd</sup> Captain			
Manager			

Date: \_\_\_\_\_

Signature: \_\_\_\_\_

Please fill in the above and send it by no later than: **7 of April 2019**

Email: [secretaria@fppd.pt](mailto:secretaria@fppd.pt) | Tel: +351 213 140 177



## Form to order Baits

Rua Dr.Henrique Carvalhão nº12 Loja 5  
6000-230 Castelo Branco

Telf: 00 351 926 686 954

Mail: [centrodepesca@gmail.com](mailto:centrodepesca@gmail.com)



		Euro €	13-05-19	14-05-19	15-05-19	16-05-19	17-05-19	18-05-19	19-05-19
White Maggots	1 Ltr	6,00 €							
Red Maggots	1 Ltr	6,00 €							
Casters	1 Ltr	15,00 €							
Dendrobaena	1 Kg	35,00 €							
Wheat	1 Ltr	2,00 €							
Hemp	1 Ltr	4,00 €							
AMVB Red Bleak Grouper	1 Kg	3,50 €							
AMVB Yellow Bleak Grouper	1 Kg	3,50 €							
AMVB Red Grouper	1 Kg	3,50 €							
AMVB Yellow Grouper	1 Kg	3,50 €							
AMVB Brown Grouper	1 Kg	3,50 €							
AMVB Black Grouper	1 Kg	3,50 €							

País / Country :

Contacto / Contact :